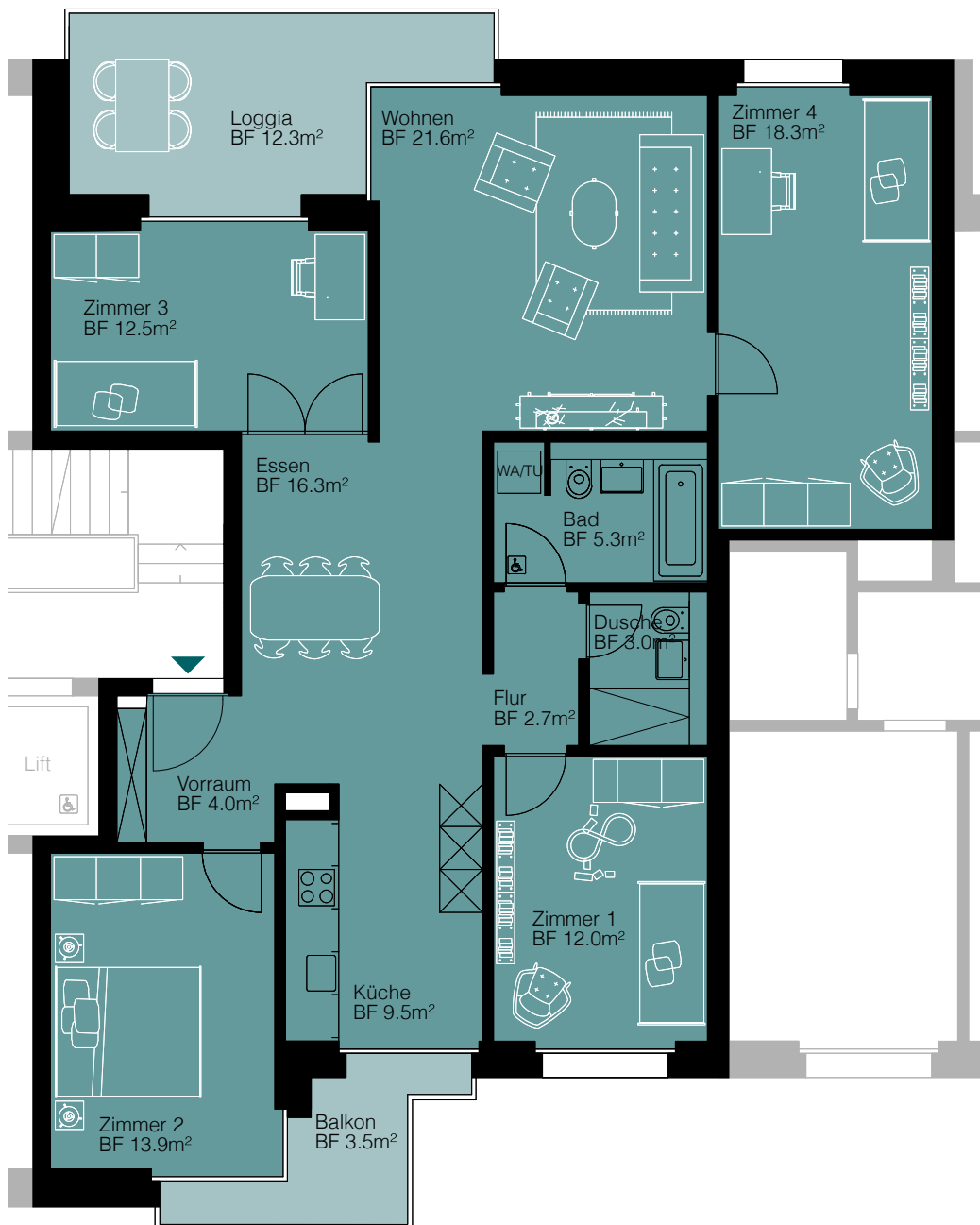


5 1/2-ZIMMER-WOHNUNGEN



Wohnfläche 119,0 m²

Balkon/Loggia 15,8 m²

wie abgebildet

WHG Aa 1.2

WHG Ab 1.2

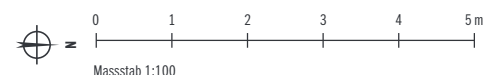
WHG Cb 1.2

gespiegelter Grundriss

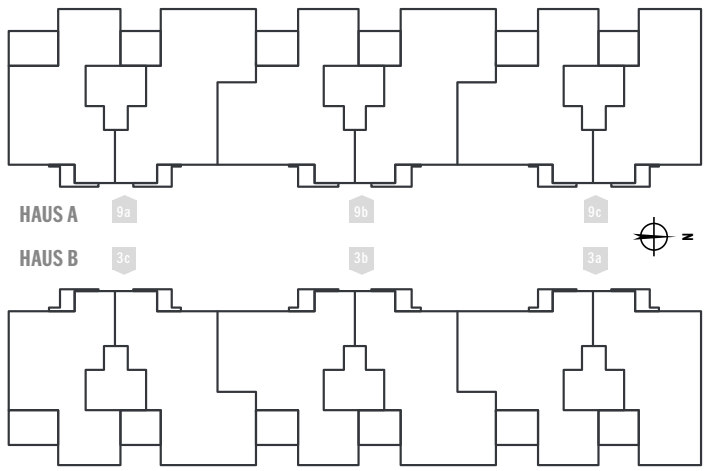
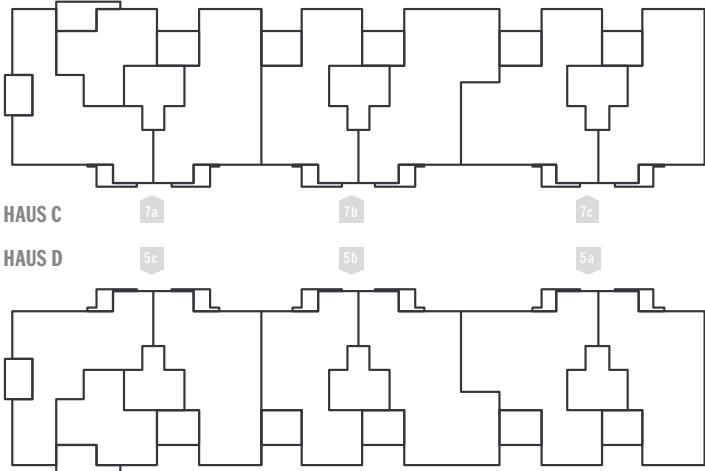
WHG Bb 1.1

WHG Bc 1.1

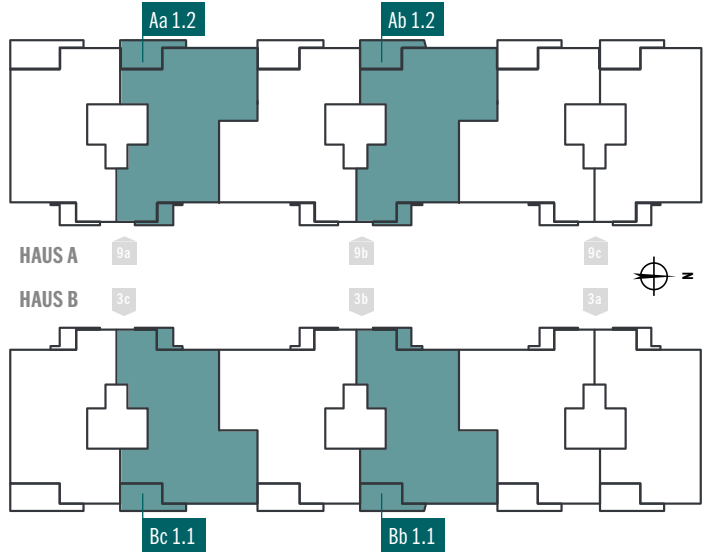
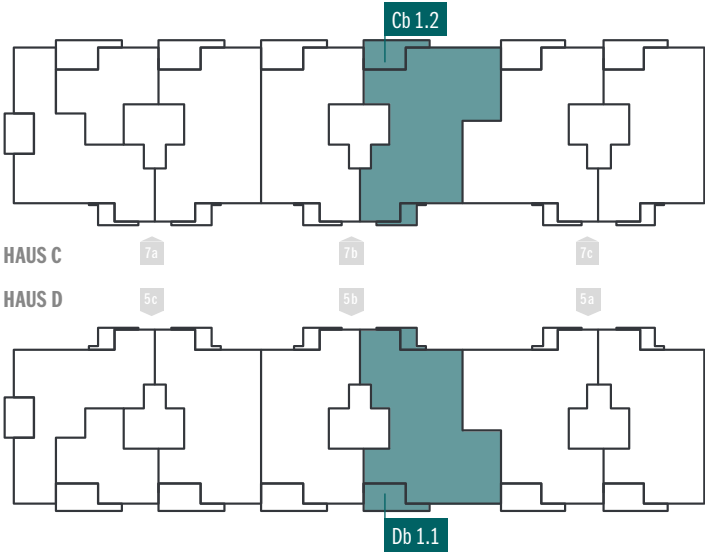
WHG Db 1.1



2. Obergeschoss



1. Obergeschoss



Erdgeschoss

