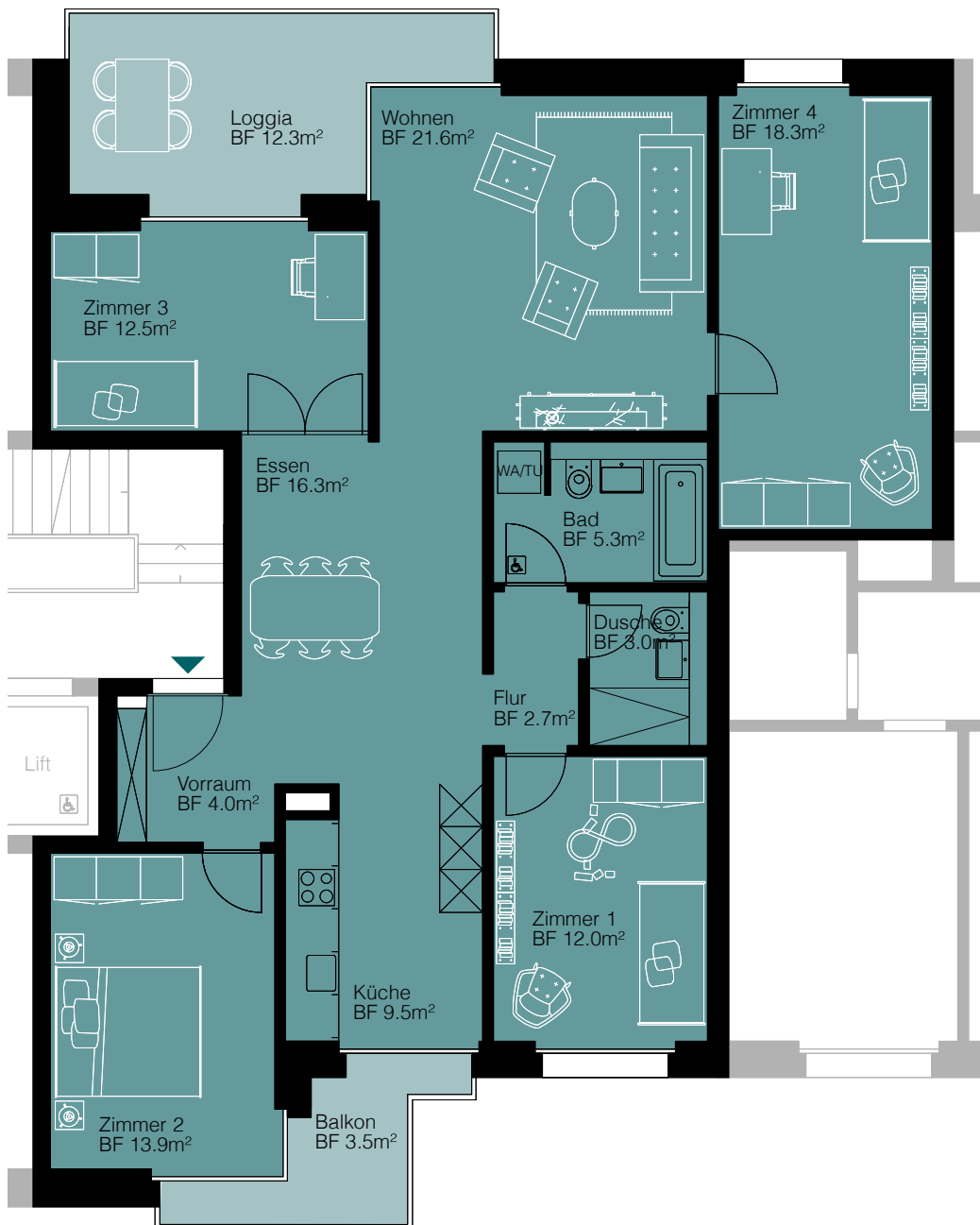


# 5 1/2-ZIMMER-WOHNUNGEN



Wohnfläche 119,0 m<sup>2</sup>

Balkon/Loggia 15,8 m<sup>2</sup>

wie abgebildet

**WHG Aa 1.2**

**WHG Ab 1.2**

**WHG Cb 1.2**

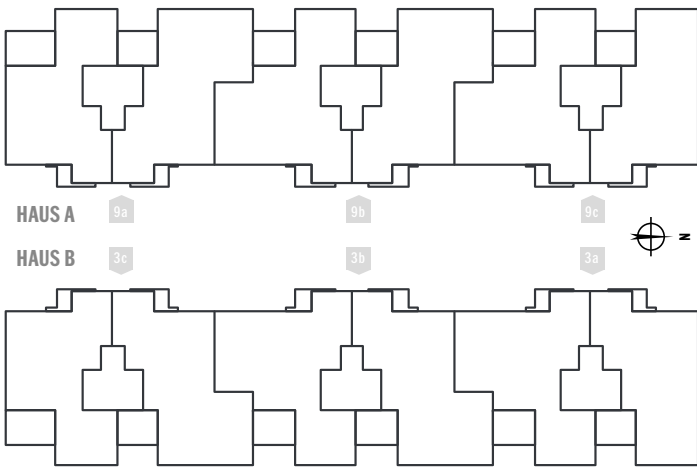
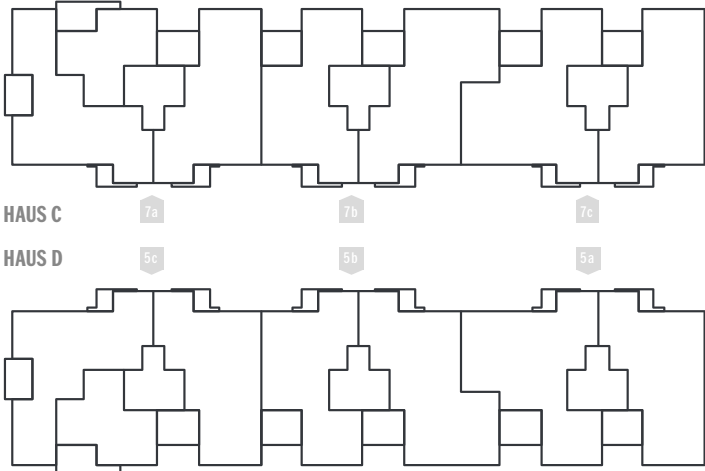
gespiegelter Grundriss

**WHG Bb 1.1**

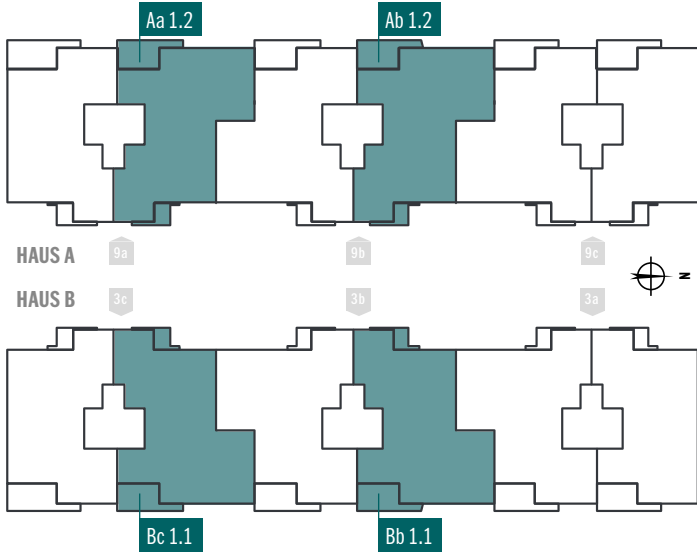
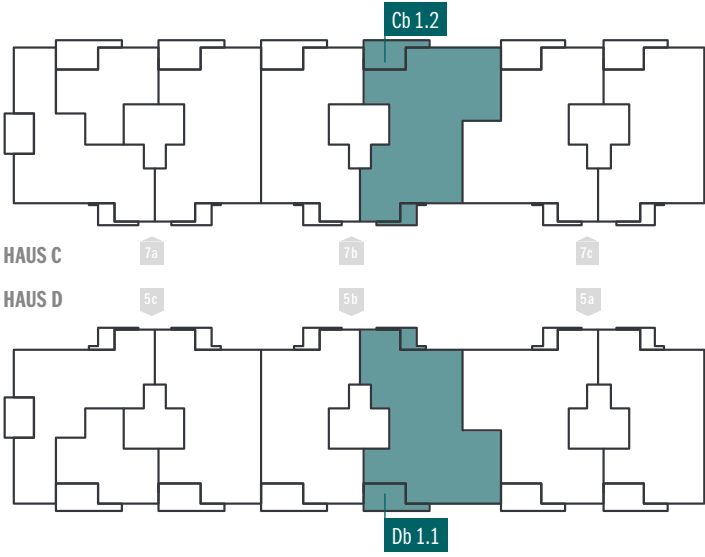
**WHG Bc 1.1**

**WHG Db 1.1**

2. Obergeschoss



1. Obergeschoss



Erdgeschoss

