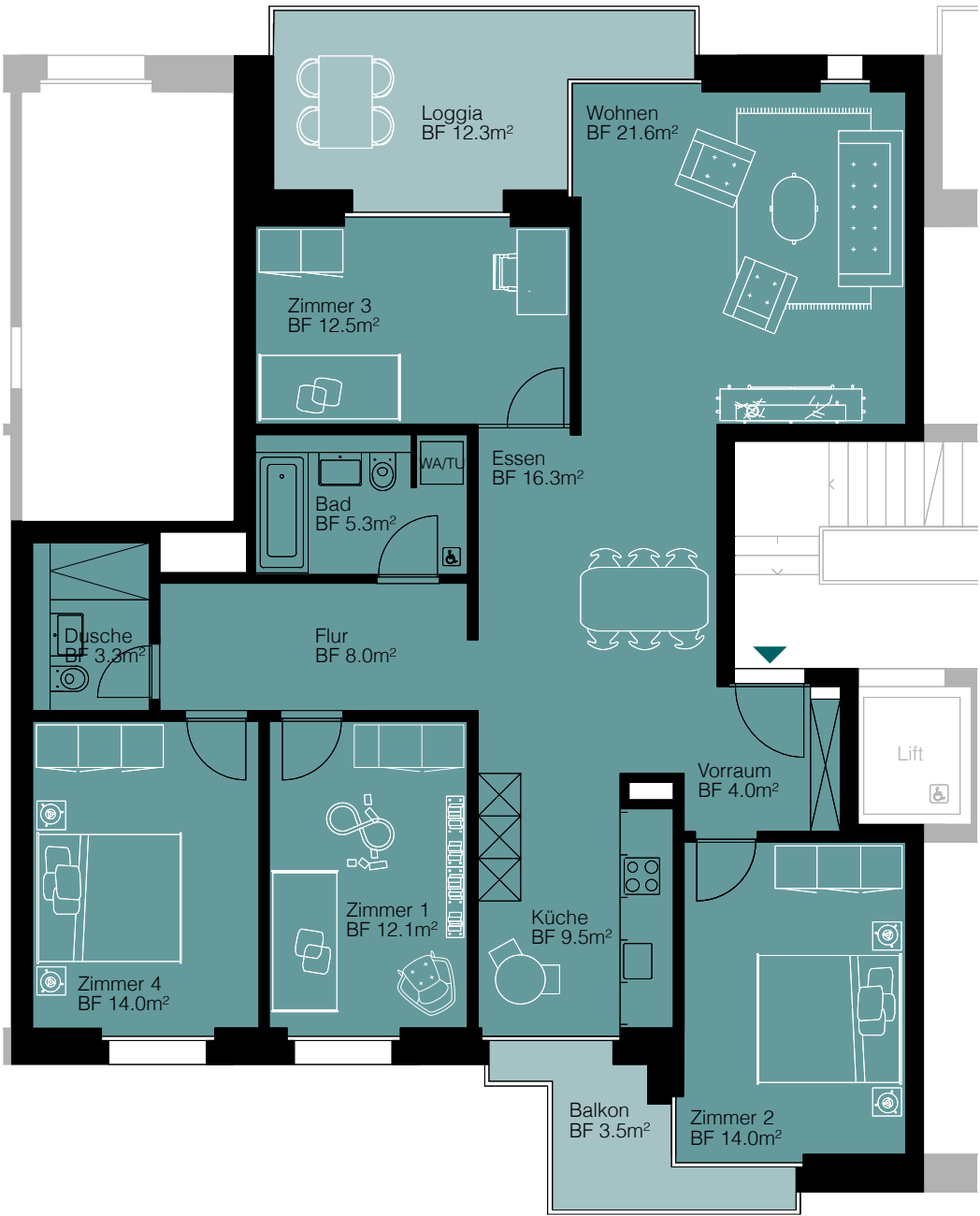


5 1/2-ZIMMER-WOHNUNGEN



Wohnfläche 120,5 m²
Balkon/Loggia 15,8 m²

wie abgebildet

WHG Ab 1.1

WHG Ac 1.1

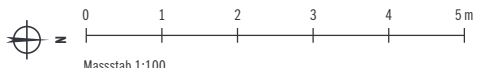
WHG Cc 1.1

gespiegelter Grundriss

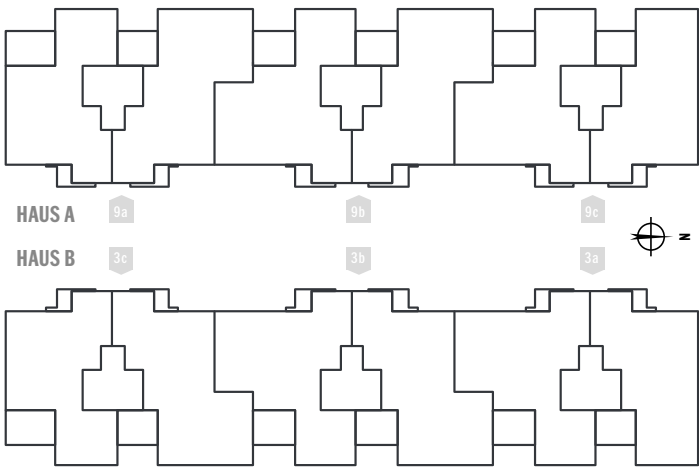
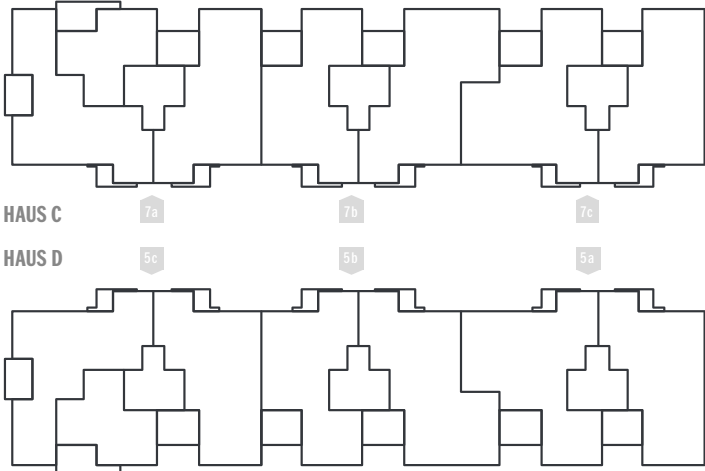
WHG Ba 1.2

WHG Bb 1.2

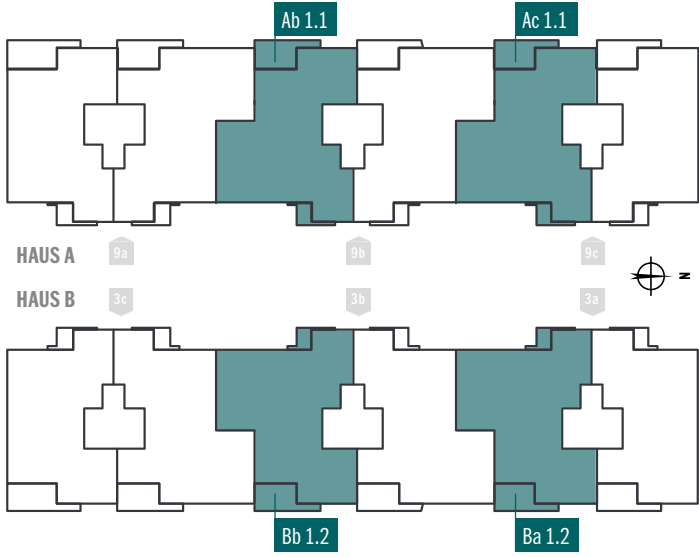
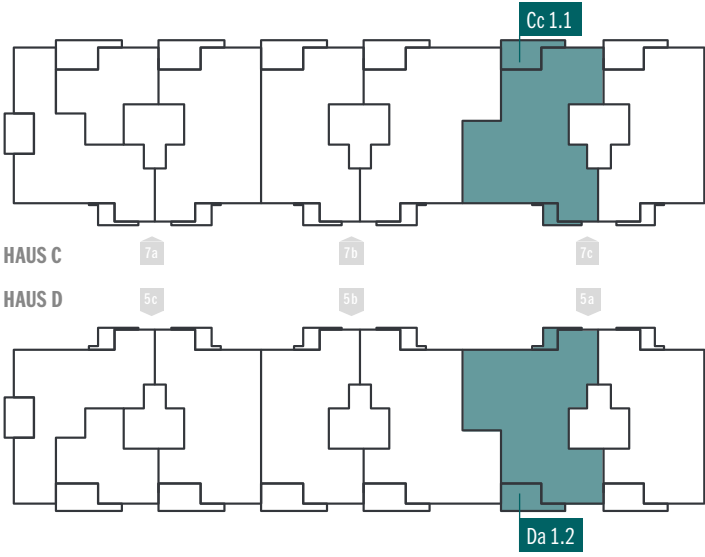
WHG Da 1.2



2. Obergeschoss



1. Obergeschoss



Erdgeschoss

